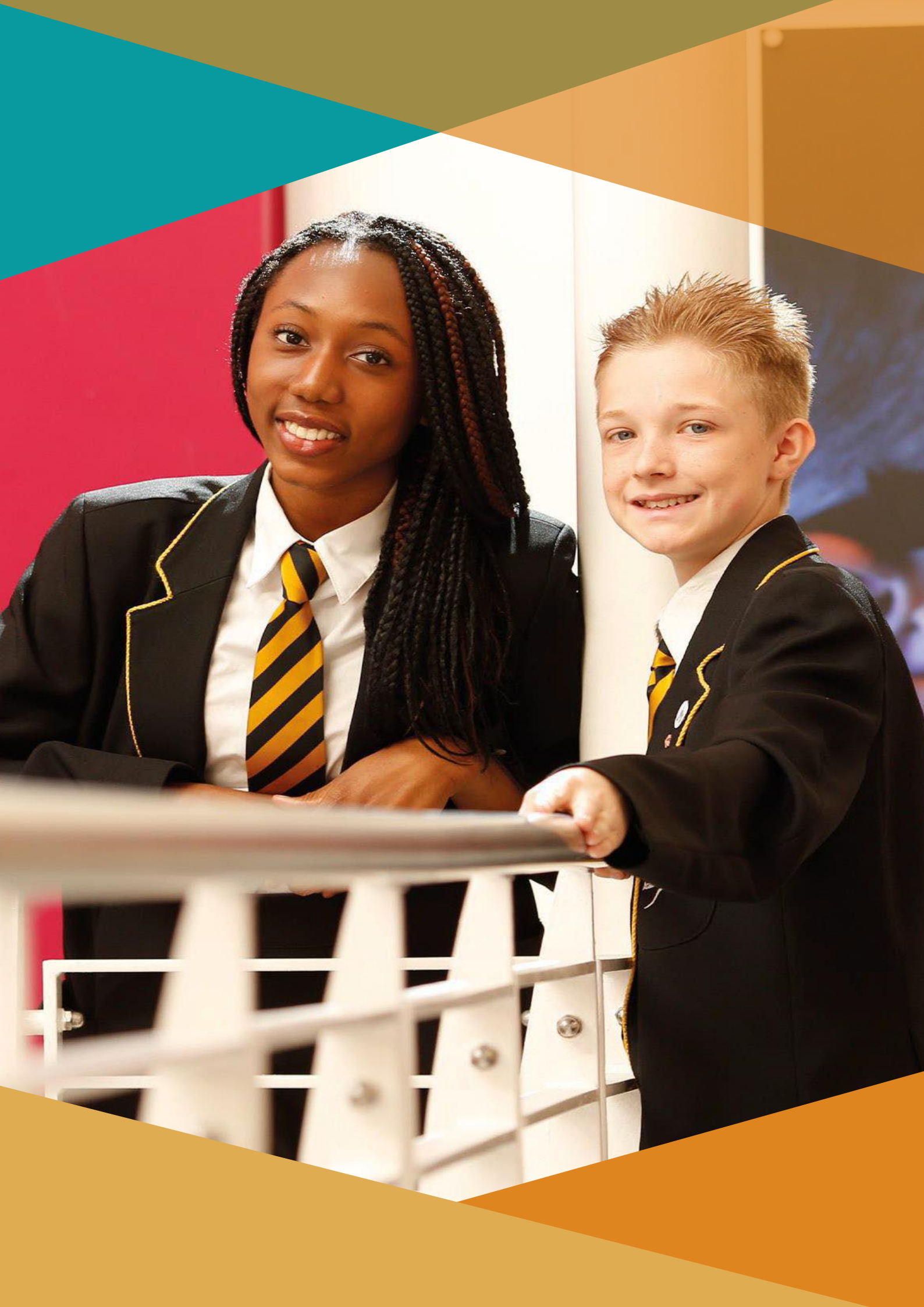


THE GATEWAY ACADEMY



IMPROVING UPON OUR BEST

www.theglc-gatewayacademy.org.uk



WELCOME

At The Gateway Academy, we uphold the highest standards, firmly rooted in our core principles of Responsibility, Resilience, Compassion and Aspiration. We expect both our staff and students to bring passion and energy in all that they do, playing pivotal roles in fostering a diverse, truly fair and equal community. With exemplary teaching, an outstanding pastoral support system and ample resources, we empower students to unlock their utmost potential. Our dedication remains unwavering in dismantling any obstacles to learning, ensuring no student is left behind.



It is quite extraordinary how well our Academy continues to flourish with student academic progress, student attendance, staff retention and attendance, all above the national average. We are renowned for our unique family ethos and our focus on hard work and discipline. We welcome visitors to come and see our exceptional Academy.

We are resilient and relentless in continuing to 'improve upon our best' and offer our students an exceptional educational experience that is life-changing.





“The Gateway Academy makes me believe I am extraordinary. The teachers believe I can succeed and support me to develop as a confident, caring and resilient young person. I feel proud to be part of The Gateway Academy family.”

A Gateway Academy Student Leadership Member

OUR APPROACH

Our GLC motto, 'all different, all equal, together improving upon our best,' encompasses the very essence of our Academy. Staff, students, parents and the community often comment on the sense of warmth and inclusiveness that is a fundamental part of Academy life. We have an incredibly strong community built on our shared purpose and positive relationships.

We encourage all of our students to have a strong sense of self and to be 'exceptional' in all that they do. We expect our students to work hard every day, follow the rules and have the highest standards for their own conduct. We live by our mission to develop our students as 'active and thriving citizens within a diverse, truly fair and equal community'. Once you have been a student at our Academy, you will always be part of the Gateway community.

OUR GLC CORE VALUES

RESPONSIBILITY

We own our behaviour and actions. We recognise that we play a fundamental role in shaping our lives, the lives of others and every aspect of the world. We understand the importance of 'making the weather'.



RESILIENCE

We tackle challenges head-on. We approach people and situations with confidence and a positive mindset. We learn from our setbacks and failures.



COMPASSION

We care for ourselves and each other. We contribute to making the world a better place. We treat others with kindness, respect and dignity.



ASPIRATION

We aim high and work hard to fulfil our potential. We believe everybody can achieve something great and realise the importance of 'improving upon our best'.



LEARNING IS PRIZED

OUR CURRICULUM

Our curriculum is broad and balanced, which supports our students to reach their full potential in all aspects of Academy life. We carefully review and select the programmes of study and the teaching approaches we employ are steeped in the latest research.

The curriculum is organised into 50 one-hour periods over 10 days. In addition to the taught curriculum, students have access to a broad range of learning experiences promoting deeper learning and opportunities to learn outside of the classroom. The Academy is always keen for young people to develop skills and aptitudes in all aspects of their lives and as a result, our extra-curricular programme is rich, varied and includes a wide range of sporting, artistic, creative, reading, debating and after-hours study opportunities. We offer a very diverse range of trips and visits to support students' learning and interests.

From Year 7, all students are equipped with laptops to support their digital literacy and enhance their access to a vast amount of online resources that will support them in their academic endeavours. Students are taught predominantly in set groups based on their prior attainment.

- Grammar Band is our accelerated learning band and is set purely on high prior attainment using more able criteria.
- X and Y bands each contain three groups, which are set according to ability in English, Maths and Science.

Although students are placed into these bands in Year 7, they are reviewed termly and there are progression paths to ensure that no student is tied to their starting points as they progress through the Academy.

In Key Stage 4, we offer students the opportunity to study Biology, Chemistry, Physics, Further Maths and Statistics to ensure they are fully prepared for the academic rigour expected when completing A Levels.

Our curriculum allows our students to develop their knowledge, skills and understanding in order for them to become life-long learners. We believe that every student has the right to learn the full curriculum in an incredibly supportive, disciplined environment. Students are given every opportunity to achieve their full academic potential by having access to our additional learning periods of study, use of our fantastic library and literacy lounge, which have extended opening hours and participation in our academic tutoring programme, which is taught by specialist teachers or former alumni students.

Our students take responsibility for their learning and, as a result, are performing above the national average across a wide variety of subjects. Any barriers to learning we overcome together and we give our students every opportunity to maximise their life chances.



“We are very impressed with the school facilities, the wonderful atmosphere and the dedication of the staff. The Academy’s commitment to staff retention and its positive approach to student discipline ensures that my child thrives. We feel really proud to be part of the Gateway community.”

A Gateway Academy Parent

ACADEMIC PROGRESS AT THE ACADEMY

Our students continue to make exceptional progress at the Academy, with many students performing significantly above the national average. We expect students to commit to their learning and overcome any barriers that prevent them from making exceptional progress. Students have every opportunity to perform at the highest level, with skilled, passionate teachers ensuring they get the best teaching and learning experience in the classroom. Students receive regular homework and have additional learning periods of study. As students progress through the Academy, the intensity of additional academic sessions increases and it is expected that students commit to continuously 'improving upon their best'.

All students have three formal assessment periods each academic year and their progress against the GCSE benchmark is reported to families. Students are provided with the key learning from each subject area and revision strategies to ensure they can reach their full potential in their assessments and learn the rigour and academic requirements to perform at the highest level. While we will do all that we can to support our students to perform at their full potential, we can only do this with the support of their families. The relationship between our staff, students and their families are key and we expect that all members play their role in supporting our students to reach their full potential and find solutions to any barriers.

“Working at the Academy with extraordinary staff and students is not a job, it is a joy. Together, we are shaping the young people under our care to break down barriers and achieve excellence.”

A Gateway Academy Teacher



GATEWAY ACADEMY'S GRAMMAR BAND



If a student achieves Greater Depth in most, if not all, of their subjects during primary school, they may be allocated a place in our Grammar Band in Year 7 and will remain in this band if they continue to meet the academic expectations.



Being in the Grammar Band means a student is expected to achieve a minimum of a grade 7 or equivalent in all their subjects. They will be in classes with students of similar ability and high aspirations, supported by academic excellence and rigour. Grammar Band students will be challenged by their teachers to perform at the highest academic level.



Grammar Band students have access to a range of extra- and super-curricular opportunities, such as visits to universities and masterclasses on various themes to support their curiosity and interest beyond the curriculum. They also have the opportunity to learn from our Gateway Academy alumni, who are former students continuing to achieve excellence at A level or degree level.



As they progress through their education at The Gateway Academy, Grammar Band students will have the opportunity to study Triple Science and Further Maths, as well as the English Baccalaureate suite of subjects, enhancing their chances of gaining a place at a prestigious university.



“Forte nihil difficile”
“To the determined, nothing is difficult”.
Benjamin Disraeli



Benjamin's words resonate through the fabric of Grammar Band; an aspiration to be unusually brave, intellectually curious and to aim for academic excellence in every subject.



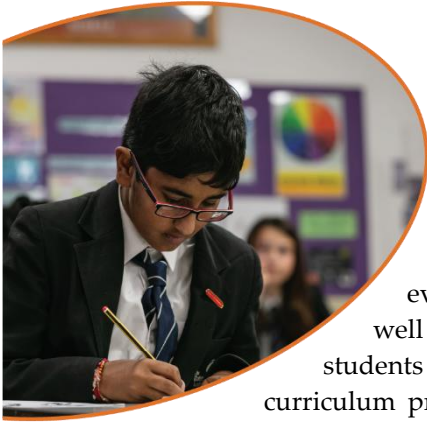
We expect our Grammar Band students to devour their learning and continuously want more, not just of themselves, but of their teachers as well. To demand rigour and limitless exposure to the hidden depths of every subject; to go beyond the bounds of possibility, to think big and dream even bigger. Students in our Grammar Band class will have earned the right to be there through hard work and by upholding our GLC values at the highest standard.



Testament to this are the GCSE results of our Grammar Band students, which are significantly above the national average. Over 500 GCSE grade 7-9s have been achieved by our Grammar Band students in the last two years and the outstanding results they have obtained are a result of their hard work, determination and high aspiration.



CREATIVE ARTS



We are intensely proud of the outstanding arts education we provide our students, where we stretch them to achieve their academic, artistic and personal potential. Students are engaged in creativity and innovation as part of an excellent academic programme that stretches well beyond the classroom. The study of arts subjects, including Art, Photography, Drama, Dance and Music, achieves the development of key life skills for every student. All arts faculty subject results have a history of achieving well above GCSE national averages, with an impressive alumnus of former students who go on to study the arts at their chosen Sixth Form. Our theatre curriculum provides students with support and challenge and the huge success in academic outcomes is one few other schools can match.

Self-discipline, imagination, confidence and creative thinking are hugely important in an ever-changing world and we aim to prepare students to meet an ever-growing demand and need for these skills through our exceptional pastoral care and expert teaching. We are particularly proud of the nurturing care and the fostering of an environment that encourages All students, regardless of their background, in all their arts endeavours.

Our studios are impressive spaces, including artist studios, a photography dark room, a kiln, drama studios that are fully technically equipped, a purpose-built mirrored dance studio, a music room with a wealth of instruments, numerous music rehearsal practice rooms and a 250-seat theatre auditorium. Our students are extremely fortunate to have an exceptional range of resources and spaces and these creative hubs are just one of the reasons why our students thrive in the arts at The Gateway Academy.

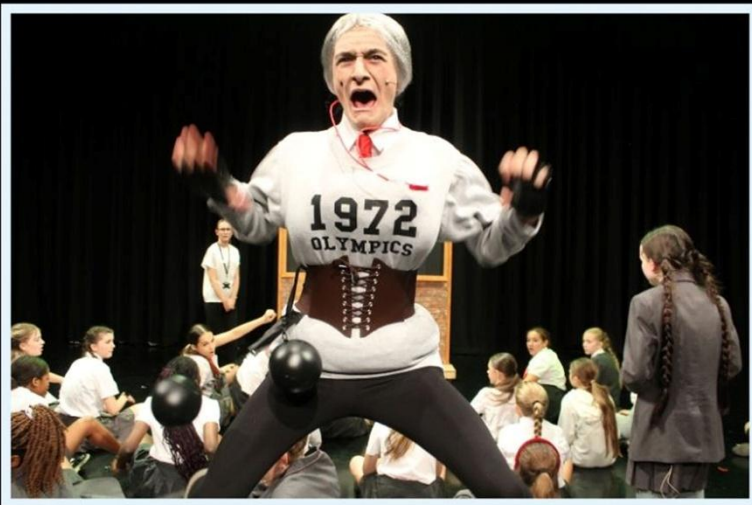
The learning we provide beyond the classroom is exceptional. Every week, there is an array of clubs, trips and performance opportunities. Students are entered for additional assessments, including LAMDA Drama examinations that are normally offered by theatre schools and music gradings. As well as numerous celebrations and exhibitions of students' work, there is an annual dance show and a school musical that includes over 100 students every year. In 2022, we performed *We Will Rock You*; in 2023, it was *High School Musical* and in December 2024, *Matilda*.

Every young person is valued, supported and encouraged to constantly 'improve upon their best.'





ROALD DAHL'S
Matilda
THE MUSICAL JR.



"I am proud to be a student at The Gateway Academy. We are not just an Academy; we are a family."

A Gateway Academy Student



SPORTS AND PHYSICAL EDUCATION



Sport at The Gateway Academy is an incredibly important aspect of Academy life for all of our students. We ensure every student across the Academy finds an activity they are passionate about and therefore, encourage them to lead a healthy, active lifestyle. We hold an unwavering value on physical education and the opportunities it can provide for our students. Our extracurricular provision is vast, with over 20 sports clubs per week plus over 50 fixtures per term. We foster an environment that encourages maximum participation and a culture of excellence. Students have the opportunity to participate in sports activities every break, lunch, before and after school. The main sports at

Gateway are football, rugby, netball, basketball, table tennis and athletics. We have outstanding facilities for all of our students to use, which range from the fitness room, large sports hall, rock climbing wall, gymnasium, astro turf and large fields with numerous football and rugby pitches.

EAP – Elite Athlete Programme

Alongside the extensive extracurricular provision available for all of our students across the Academy, we also have an elite sports programme that nurtures the very best student athletes. The 'Elite Athlete Programme' is designed to support the most talented athletes across the Academy by improving their technical and tactical understanding of sport and preparing them for possible progression into elite sport. The EAP is incredibly successful, with a number of teams achieving local and regional success and several of our students going on to study sports at Sixth Form specialist sports provision.

Greenhouse Programme

Our third strand of Gateway Sport is The Greenhouse Programme, led by our full-time Basketball Coach, Lee McCarthy. Students have the opportunity to take part in 'STEP' sessions that focus on improving their Social, Thinking, Emotional and Physical skills through an individualised basketball programme. Alongside the STEP sessions, students are mentored by Coach Lee to focus on their academic studies and ensure they fulfil their potential while studying at the Academy. The basketball programme is incredibly successful, winning countless district titles and achieving Essex honours.





BEYOND THE CLASSROOM



Extracurricular Activities

We believe that all students develop into active and thriving citizens by participating in activities beyond the classroom. This is fundamental to their wellbeing and helps ensure that students feel part of The Gateway Academy community. We offer an extensive range of activities for students to engage in, including Drama, Photography, Dance, Chess, Table Tennis, Science, Mathematics, Debating and many more. It is not unusual to see students at the Academy from early morning until late evening, involved in clubs or studying in the library.

Additional Academic Tutoring

We ensure that students are supported in maximising their academic progress beyond the classroom and they are often required to attend additional learning periods after school. It is compulsory for Year 11 students to attend at least three hours of additional academic support after school, every week with specialist staff. We believe that all students can succeed and expect that any barriers to academic performance are overcome by working together.



Army Cadets

The Army Cadets is a unique educational partnership that helps our students develop lifelong leadership skills, discipline and self-confidence. Cadets receive training during weekly parades, full-day and weekend training sessions (field days), annual military camps, courses run by the Armed Forces and adventurous training expeditions. Through these experiences, students build resilience, teamwork and problem-solving skills that prepare them for future challenges. They also have the opportunity to earn nationally recognised qualifications, participate in community service projects and develop a strong sense of responsibility and commitment.

Duke of Edinburgh's Award

All students in Year 9 and Year 10 have the opportunity to participate in The Duke of Edinburgh's Award (DofE). The DofE encourages students to take on exciting challenges and work towards personalised goals. It promotes teamwork, self-discipline, empathy and independence, providing students with valuable life skills. For many, it is a life-changing experience that fosters resilience and personal growth.



The Student Leadership Team

The Student Leadership Team consists of members from all year groups who play a key role in supporting the Academy and the wider community. Their contributions are invaluable and they act as ambassadors at all times, representing the student body with pride and responsibility. They take the lead in various groups, including our mental health and equality groups, as well as initiatives focused on environmental sustainability, student wellbeing and peer mentoring. Through their leadership, they help shape school policies, organise events and provide a voice for their peers, ensuring that all students feel heard and valued within the Academy.





....the focus on the wellbeing and care of your young people stands out as being extraordinary. Children come first at The Gateway Academy and their individual needs are a priority. The attention to detail on the wellbeing and progress of each individual student is at the heart of your success. The ethos and atmosphere are warm and friendly and it is clear that there are strong relationships between staff and students. Staff are always prepared to go the extra mile for the young people in their care." *Kenny Frederick IQM Assessor*



The Gateway Academy

What Ofsted says

The school has established a strong curriculum. This identifies what pupils need to know to be successful. Teachers deliver the curriculum with considerable consistency.

Pupils benefit from high expectations for learning. This is in all subjects, but especially in English and mathematics they are highly successful.

Teachers check learning thoroughly and effectively. They rectify where pupils have gaps in knowledge. Pupils build on secure foundations.

Pupils live and breathe the school's values. Behaviour is excellent. Classrooms are purposeful. Pupils work hard and are eager to learn. Throughout the day they are orderly and polite. Pupils help to build this positive culture.

There is a palpable sense of community at the Gateway Academy. Pupils and families praise the wide-ranging support. For instance, there are well-attended learning activities before and after the school day.

The trust and school leaders have built a culture in which staff flourish. Staff retention is high. This leads to better provision for pupils.



ADMISSIONS CRITERIA

The Gateway Academy will consider all applications for places. Where fewer than 215 applications are received, The Gateway Academy will offer places to all those who have applied (although in certain circumstances the Academy can refuse admission). For further details please ask for a copy of our Admissions Policy. Alternatively, the policy can be viewed via the GLC website: www.theglc.org.uk/Key Information/Policies and Procedures.

Procedures for admission to Year 7 where the Academy is oversubscribed

Where the number of applications for admission is greater than the published admissions number, applications will be considered against the criteria set out below in order from a – f:

- a) Children who are looked after or previously looked after, including those children who appear to have been in state care outside of England and ceased to be in state as a result of being adopted.
- b) Admission of students whose siblings currently attend the Academy and will continue to do so on the date of admission. For the purpose of allocating places, sibling means:
 - Full sibling living at the same address as the applicant;
 - Full sibling living with a parent, or family member, at a different address;
 - Step sibling living at the same address as the applicant;
 - Half sibling living at the same address as the applicant;
 - Long term foster sibling living at the same address as the applicant.
- c) Admission of students who attend the Gateway Primary Free School [a designated feeder school]. The Free School pupils have priority due to the All-Through organisation of learning and the integrated relationship between the young people in the Free School and those in The Gateway Academy.
- d) Admission of students who attend primary schools in the Gateway Learning Community [i.e., Herringham Primary Academy, Lansdowne Primary Academy and Tilbury Pioneer Academy are designated feeder schools]. The Gateway Learning Community schools have priority due to the wholly collaborative relationships between the schools that include: common governance arrangements; joint curriculum delivery; a shared student code of conduct; shared inclusion services; joint activities for targeted students including those of SEND and who are More Able. It is our aim to provide a holistic approach to education for all GLC students and their families.
- e) Admission of a child who lives permanently with their parent, carer or guardian who is a member of staff [teaching or non-teaching on a part of full-time contract] and employed at any school within The Gateway Learning Community at the time at which the application for admission to The Gateway Academy is made and/or the member of staff is recruited to fill a vacant post for which there is a demonstrable skill shortage.
- f) Admission of students on the basis of proximity to the Academy using straight line measurement with students living nearer to the Academy being given higher priority.

Distance from the Academy will be measured in a straight line in metres by a digital mapping system from the Academy's main gate to the front door of the home. If the final place is allocated to a family with twins or multiple births, a place will be offered to both. If there is a tie for the final place, a draw will be conducted by a person independent of the Academy.

TIMINGS OF THE DAY

	YEARS 7 – 11
08.15	Period 1
08.45	Period 2
09.45	Period 3
10.45 – 11.15	Break
11.15	Period 4
12.15	Period 5
13.15 – 13.45	Lunch
13.45	Period 6
14.45	Year 7 & Year 8 Dismissal
14.50	Year 9, Year 10 and Year 11 Dismissal

FORMER STUDENTS WHO ARE NOW STAFF MEMBERS

A Testament to The Gateway Academy: Former Students Return as Teachers

The Gateway Academy is not just a place of learning; it is a community where aspirations take flight and futures are shaped. What better testament to the Academy's enduring impact than the return of its own students, now as dedicated teachers? This remarkable phenomenon speaks volumes about the nurturing environment, the quality of education and the powerful sense of belonging that The Gateway Academy fosters.

Several former students, inspired by their own transformative experiences, have chosen to return to The Gateway Academy to guide and inspire the next generation. These individuals, who once walked the same corridors and sat in the same classrooms, now stand at the forefront of education, embodying the Academy's core values of responsibility, resilience, compassion and aspiration.

The presence of these alumni as teachers enriches the Academy in immeasurable ways. They bring a unique blend of passion, expertise and personal experience, creating a dynamic and supportive learning environment. Their return is not just a source of pride for The Gateway Academy; it is a powerful affirmation of the Academy's lasting legacy.

Chloe Locke – Teacher of Mathematics

I left the Gateway Academy in 2019. After leaving, I went on to study A Levels in Maths, Biology and Chemistry at Palmers College, achieving a grade A in all three subjects. I then secured a place at the University of Nottingham where I studied Psychology and Cognitive Neuroscience, graduating in 2024 with a 2:1.

The Gateway Academy has been a defining part of my life, shaping me first as a student and now as a teacher. Returning to the very place that once nurtured my own growth has been both humbling and inspiring. The transition from student to educator has deepened my appreciation for the Academy's values and the unwavering support it provides. Throughout every stage of my journey, I have felt genuinely encouraged—by teachers who believed in me, by mentors who guided me and now by colleagues who continue to inspire me. This consistent support has given me the confidence to grow, give back and help others discover their own potential.

The Gateway Academy has taught me that education is not just about passing exams—it is about nurturing confidence, building character and lighting the way forward for each individual. I am proud to be a part of an environment where every member of staff is deeply invested in making a lasting difference. We are not just shaping students' futures—we are building a better community, together.





Danielle Robertson – Teacher of Mathematics

I left The Gateway Academy in 2013. After leaving, I went on to study A Levels in Maths, BTEC Sports and Exercise Science, Dance and Health and Social Care at Palmer’s College. I then secured a place at Canterbury Christ Church University where I studied BA Sports and Exercise Science and Physical Education for three years, graduating in 2018 with a 2:1. I continued my studies by completing my Post Graduate Certificate in Education (PGCE) in Maths and PE.

The Gateway Academy made a long-lasting impression on me—one which I did not fully grasp the depth of until years after I had left. It was only with time and experience that I began to understand how profoundly my time at the Academy had shaped me—not just academically but in terms of my character, aspirations and sense of purpose. It instilled in me values that I carry to this day: resilience, compassion and a belief in the power of education to transform lives.

Now, with a deeper appreciation for the role the Academy played in my own journey, I am more determined than ever to give back. I want to dedicate my career to being that same source of inspiration and support for other young people, especially those in the local area I proudly call home. My goal is to create the same positive, lasting impact that I was fortunate enough to experience.

Sam Blake – Teacher of Mathematics and Science

I left The Gateway Academy in 2019. After leaving, I went on to study A Levels in Maths, Business and Computer Science at Palmer’s College. I then secured a place at the University of Wolverhampton where I studied Mathematics with Secondary Education and then moved on to the Open University to finish my degree in Combined STEM.

Growing up in Thurrock, I attended The Gateway Academy. Through the Academy’s values, I gained a real sense of community and I knew that I wanted to make a difference to the people in our community.

As a student, through high quality teaching taking place in a supportive, inclusive and interactive environment and the unmatched dedication of my teachers, I not only achieved the grades I needed to progress in my education but I also grew personally in a way which I could not have imagined doing without the support of the Academy and its staff. I was encouraged and given the confidence to peruse my career in teaching, the Academy provided me countless opportunities to make a career that once was my dream and is now a reality.

I returned to the Gateway Academy as a teacher as I believe in the people of Thurrock. I believe that our young people can achieve and working at the Gateway gives me the opportunity to help our young people build solid and secure foundations for their future. Every single member of staff at the Academy shares this same belief in our young people. It is this belief that changed my life as a student and inspires me to change the lives of our young people.





Jodie Lee – Teacher of History

I left The Gateway Academy in 2018 and went on to study A Levels in Law and Sociology, along with a BTEC in Health and Social Care at Palmers College.

I chose to work at The Gateway Academy because of its welcoming, inclusive environment and the strong sense of collaboration among staff. From the moment I joined, I felt a genuine sense of belonging and shared purpose, with everyone committed to both student success and supporting one another.

Working with young people from my local community is incredibly rewarding. Helping them grow, learn and achieve their goals fills me with pride and motivates me every day, especially in a school that is dedicated to making a difference.

I am also grateful for the support I have received here—through professional development, mentorship and everyday encouragement from colleagues. The Gateway Academy is more than just a workplace; it's a community I am proud to be a part of.

Michaela Moon – Teacher of Science

I left The Gateway Academy in 2009, focusing on PE and Dance. I then studied Sport and Exercise Science at the University of East London, graduating with a 2:1 in 2014. Afterwards, I returned to the Academy as a Coach within the Pastoral Team, where I decided to pursue teaching, completing my PGCE and gaining QTS.

The Gateway Academy has been a significant part of my life, providing support through both challenges and successes. Looking back, I realise how much it shaped my confidence and resilience. I am so proud to be a former student and that pride motivated me to return and contribute to students' lives in the same way my teachers did for me.

Having experienced the Academy's impact firsthand, I am dedicated to supporting and uplifting young people, particularly those from the community that shaped me. My goal is to be a positive, steady presence in their lives, just as my teachers were for me. I am proud to be part of The Gateway Academy family.

Natasha Gazzard – Teacher of Science

After leaving The Gateway Academy in 2013, I studied AS Psychology, AS Sociology and BTEC Triple Applied Science at Palmer's College. I then went on to study Veterinary Bioscience BSc (Hons) at the University of Surrey, completing a placement in Valencia, supporting research on bacterial infections in the farming industry and graduated with a 2:1.

I was later invited back to The Gateway Academy as a Learning Support Assistant in the Science Department, where I found satisfaction in supporting students' learning. With the support of colleagues, I completed a Postgraduate Certificate in Education in Science while working at the school.


I have stayed at The Gateway Academy because of the strong community and the opportunity to be part of students' journeys. Now, as Head of Biology, I am focused on my self-development and contributing to the Academy's progress, ensuring we continue to support our students even more effectively.



“

We were not
born to be average.

We were born
to be exceptional.

We are 
The Gateway Academy.

”





GLC Gateway Academy

All Different: All Equal: Together, Improving Upon Our Best

Marshfoot Road
Tilbury / Chadwell St Mary
Essex
RM16 4LU

Tel: 01375 489000
info@theglc.org.uk

www.theglc.org.uk